

LCD Flat Panel Monitors

17" HIGH RESOLUTION TFT FLAT PANEL COLOR LCD MONITOR

- Video, VGA, audio inputs
- 1280 (H) x 1024 (V) SXGA resolution
- Convenient front controls for on-screen programming
- Front-mounted speakers • 300 cd/m² Brightness
- 700:1 Contrast ratio • Screen: 17.0" TFT
- VGA signal connector: D-Sub 15 pins
- 12V, 36W Adapter/Power Cord/VGA & Audio Cable
- Dimensions: 17.72"H x 16.9"W x 5.9"D



VM-17LCD

15" HIGH RESOLUTION TFT FLAT PANEL COLOR LCD MONITOR

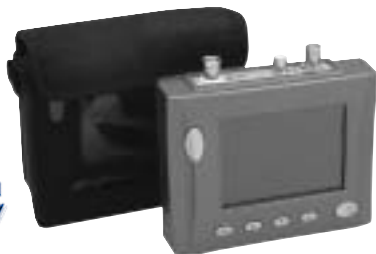
- 1024 x 768 resolution • Convenient front controls for on-screen programming
- On-Screen controls allow adj. of brightness, contrast, hue, color, vertical position, horizontal position and volume • Input signal detection provides easy connection
- Front-mounted speakers • 350cd Brightness • 500:1 Contrast ratio
- VGA, A/V, AUX & 12V DC inputs • Regulated 12V DC power supply (UL & CSA listed)
- A/V cable with RCA connectors, a BNC/RCA adapter • Screen: 15.1" • Base: 5.6" • VESA compatible



VM-15LCD

3.5" COLOR LCD TEST MONITOR WITH CABLE TESTER AND BUILT-IN RECHARGEABLE BATTERY

NEW



- Video and audio input • 480 x 234 line resolution
- Coaxial cable quality test: open, short, excellent, good, poor
- Built-in 0.5W speaker • NTSC/PAL auto switch
- 3 hour charge time • 4 hour working time
- Auto power-saving design • Low battery warning
- Built-in 2200mA battery • Menu-driven operation - full OSD
- 250mA consumption
- 12 Volt DC output for camera
- Dimensions: 5" L x 4.5" H x 1.5" D • Weight: 1lb.
- Includes power supply / recharger / strap / test cables

VMS-3

PORTABLE CCTV INSTALLATION & TEST MONITOR IN CARRYING CASE

- Convenient case with shoulder strap
- Handy compact size and shock resistant
- Built-in rechargeable battery
- Includes battery charger
- TFT LCD panel • 480 x 234 Resolution
- 350cd Brightness
- 250:1 Contrast ratio
- L/R ±45° U/D:10°/30° View angle
- NTSC • Video input 1 Vp-p at 75
- 30 mVp-p ~ 100 mVp-p Audio input
- 0.5 Watts max / 8 Audio output
- Video/Audio connector: RCA W/BNC plug Adapter
- 12V.1.1AH. Rechargeable battery
- 12V DC power supply
- Power consumption 4.5 watts
- 6"Wx 5.1"H x 3"D • 4.3lbs.



VMS-2
Extra Battery BVMS-2