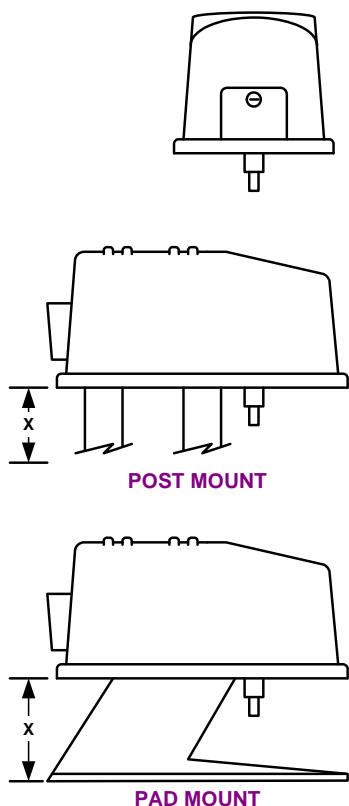


MODEL 6100 Swing Gate Operator

For gates up to 14-feet wide, 500 Lb. maximum gate weight

The model 6100 swing gate operator is designed to operate vehicular swing gates in residential and commercial applications. These operators can be installed on mounting posts or directly onto a concrete mounting-pad.



Standard Features

- 1/2 HP continuous duty motor
- For gates up to 14-feet wide, 500 Lb.
- Includes Primary and Built-in Secondary entrapment prevention system
- Self-adjusting, maintenance free limits
- Programming switches allow you to set desired mode of operation
- Keyed release for manual operation
- Fail-safe design
- Auto-close timer
- Plug-in loop detectors
- Overlap feature for bi-parting gate operation
- Gate Tracker reporting output provides operator data to access control system* (*DKS systems with card access only)
- 5-year limited warranty
- 10°F to 140°F (-12°C to 62°C)

Options

- Available for single or dual gates
- Bi-parting gate connection cable (second operator includes 40-feet of cable)
- Post or Pad mounting options
- DC Powered convenience open
- Gate operator control stations
- Heater kit (recommended when temperature routinely falls below 32°F (0°C).
- Secondary entrapment prevention devices
- Plug-in loop detectors.
- Swing gate accessories

Dimensions	Shipping Weight	Class	Power
6100 - Standard 13.25"w x 12"H x 23"L	82 Lbs.	Class: I, II, III, IV	115 VAC, 60 Hz 1/2 HP: 5.4 A
6100 w / Convenience Open 13.25"W x 12"H x 28"L	102 Lbs.	Class: I, II, III, IV	115 VAC, 60 Hz 1/2 HP: 5.4 A
Post Mount "X" Dimension: Variable by Installation	44 Lbs.		
Pad Mount "X" Dimension: 10"	42 Lbs.		

DOORKING VEHICULAR GATE OPERATORS

Rev 6/08

6100 Swing Gate Operator Assemblies – List Price		
Description		
Single Gate (Pri Operator + Hardware Kit)	(Note 1)	Order using P/N's below.
Dual Gate (Pri + Sec Operator + 2 Hardware Kits)	(Note 2)	
Single Gate w/ DC Open (Pri Operator + Kit)	(Note 3)	
Dual Gate w/ DC Open (Pri + Sec Operator + 2 Kits)	(Note 4)	

6100 Swing Gate Operator Components		
P/N	Description	
6100-080	1/2 HP Primary Operator, 115 VAC	
6100-081	1/2 HP Secondary Operator	(Note 7)
6100-082	1/2 HP Primary Operator, 115 VAC w/ DC Open	
6100-083	1/2 HP Secondary Operator w/ DC Open	(Note 7)
2600-674	Hardware Kit for Post Mounted Operator	(Note 5)
2600-671	Hardware Kit for Pad Mounted Operator	(Note 6)

Accessories		
P/N	Description	
9409-010	DoorKing plug-in 2-channel detector. Use with DKS operators only.	
9410-010	DoorKing plug-in single channel detector. Use with DKS operators only.	
1601-154	Heater Kit Heater kit for operators installed in cold weather environments. Built-in fan and thermostat.	

To Order: Select an operator(s) AND hardware kit(s).

Hardware Kit(s) Must Be Ordered with the Operator(s). Hardware kits include drive arm and extension arm, arm mounting brackets, arm joint and mounting configuration (post or pad) hardware.

Notes:

- (1) Price includes Primary operator and respective hardware kit.
- (2) Price includes Primary and Secondary operators, two hardware kits and 30-ft of interconnection cable.
- (3) Price includes Primary operator with DC Convenience Open and respective hardware kit.
- (4) Price includes Primary and Secondary operators with DC Convenience Open, two hardware kits and 30-ft of interconnection cable.
- (5) Includes two 2-1/2 inch (O.D.) mounting posts and necessary hardware.
- (6) Includes mounting base and necessary hardware.
- (7) Secondary operator must be used with a primary operator.