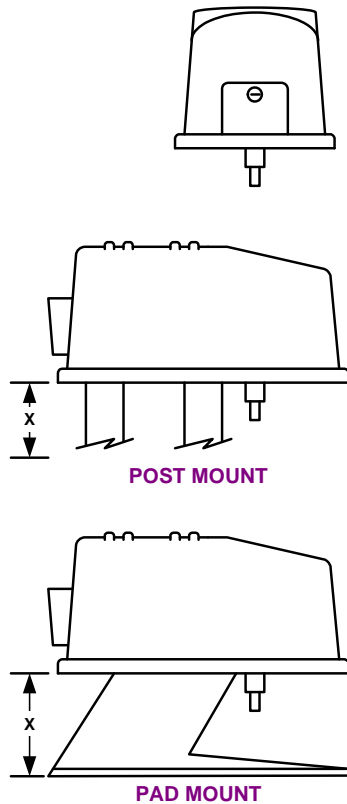


## MODEL 6050 Swing Gate Operator

*For gates up to 10-feet wide, 400 Lb. maximum gate weight*

The model 6050 swing gate operator is designed to operate vehicular swing gates in residential applications. These operators can be installed on mounting posts or directly onto a concrete mounting-pad.



### Standard Features

- 1/2 HP limited duty motor
- For gates up to 10-feet wide, 400 Lb.
- Includes Primary and Built-in Secondary entrapment prevention system
- Self-adjusting, maintenance free limits
- Programming switches allow you to set desired mode of operation
- Keyed release for manual operation
- Fail-safe design
- Auto-close timer
- Plug-in loop detectors
- Overlap feature for bi-parting gate operation
- Gate Tracker reporting output provides operator data to access control system\* (\*DKS systems with card access only)
- 5-year limited warranty
- 10°F to 140°F (-12°C to 62°C)

### Options

- Available for single or dual gates
- Bi-parting gate connection cable (second operator includes 30-feet of cable)
- Post or Pad mounting options
- Gate operator control stations
- Heater kit (recommended when temperature routinely falls below 32°F (0°C).
- Secondary entrapment prevention devices
- Plug-in loop detectors
- Swing gate accessories

Dimensions	Shipping Weight	Class	Power
6050 13.25"w x 12"H x 23"L	74 Lbs.	Class: I	115 VAC, 60 Hz 1/2 HP: 4.3 A
Post Mount "X" Dimension: Variable by Installation	44 Lbs.		
Pad Mount "X" Dimension: 10"	42 Lbs.		

**DOORKING VEHICULAR GATE OPERATORS**

Rev 6/08

<b>6050 Swing Gate Operator Complete Assemblies</b>		
<b>Description</b>		Order using P/N's below.
Single Gate (Pri Operator + Hardware Kit)	(Note 1)	
Dual Gate (Pri + Sec Operator + 2 Hardware Kits)	(Note 2)	

<b>6050 Swing Gate Operator Components</b>		
<b>P/N</b>	<b>Description</b>	
6050-080	1/2 HP Pri Operator (Limited Duty), 115 VAC	
6050-081	1/2 HP Sec Operator (Limited Duty)	(Note 5)
2600-674	Hardware Kit for <b>Post</b> Mounted Operators	(Note 3)
2600-671	Hardware Kit for <b>Pad</b> Mounted Operators	(Note 4)

<b>Accessories</b>		
<b>P/N</b>	<b>Description</b>	
9409-010	DoorKing plug-in 2-channel detector. Use with DKS operators only.	
9410-010	DoorKing plug-in single channel detector. Use with DKS operators only.	
1601-154	<b>Heater Kit</b> Heater kit for operators installed in cold weather environments. Built-in fan and thermostat.	

**To Order: Select an operator(s) AND hardware kit(s).**

**Hardware Kit(s) Must Be Ordered with the Operator(s). Hardware kits include drive arm and extension arm, arm mounting brackets, arm joint and mounting configuration (post or pad) hardware.**

**Notes:**

- (1) Price includes Primary operator and respective hardware kit.
- (2) Price includes Primary and Secondary operators, two hardware kits and 30-ft of interconnection cable.
- (3) Includes two 2-1/2 inch (O.D.) mounting posts and necessary hardware.
- (4) Includes mounting base and necessary hardware.
- (5) Secondary operator must be used with a primary operator.