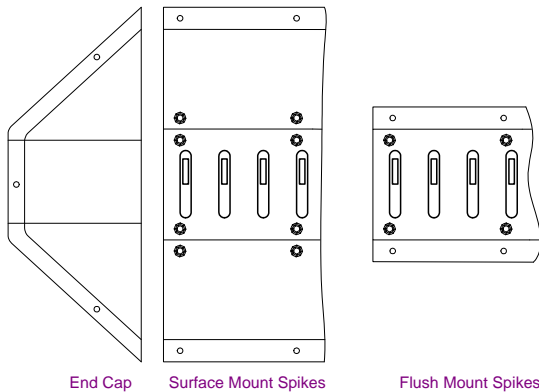


Stand-Alone Traffic Control

Traffic Spikes, Speed Bumps

These traffic control products are ideal for controlling traffic direction and speed through a controlled entry location. Traffic spikes are used to enforce one-way traffic and speed bumps force vehicles to slow down as they pass through the controlled area. **The illuminated warning sign must be used with the traffic spikes.**

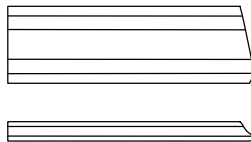


Traffic Spikes

- Surface or Flush (in-ground) units
- Lock down standard on surface mount, optional on flush mount
- Flush mount available in spring loaded or weighted (non-spring) versions
- **Warning sign MUST be used with installation of all traffic spikes.**
- Ideal to enforce one-way traffic
- 1-year limited warranty

Speed Bump

- 6-foot unit is constructed from solid composite material
- Maintenance free
- Colored bright yellow for easy visibility
- **Installs on concrete roadways only**
- 1-year limited warranty



Dimensions	Shipping Weight	Mounting	Power
Traffic Spikes Flush Mount 12.5"W x 6.5"H x 72"L	140 Lbs.	Flush with roadway when installed	N / A
Traffic Spikes Surface Mount 31"W x 2"H x 36"L	165 Lbs.	Surface mount unit Concrete roadways only	N / A
End Cap Surface Mount 31"W x 2"H x 8.5"L	15 Lbs.	Surface mount unit Concrete roadways only	N / A
Speed Bumps 11.5"W x 2"H x 72"L	30 Lbs.	Surface mount unit Concrete roadways only	N / A

DOORKING PARKING CONTROL PRODUCTS

Rev 7/24/08

Stand-Alone Traffic Control		
P/N	Description	
1610-080	Flush Mount traffic spikes, spring loaded (Note 1)	
1610-081	Flush Mount traffic spikes, weighted (Note 1)	
1610-082	Flush Mount traffic spikes, spring loaded w / lock down (Note 1, 2)	
1610-083	Flush Mount traffic spikes, weighted w / lock down (Note 1, 2)	
1610-086	Surface Mount traffic spike assembly (3-ft spike section, 2 end caps) (Note 1, 2)	
1610-085	Surface Mount traffic spike, 3-ft section (use w / 1610-086) (Note 1, 2)	
1610-010	Lock Down handle for 1610-085 and 1610-086 (Note 3)	
1610-012	Lock Down handle for 1610-082 (Note 3)	
1610-013	Lock Down handle for 1610-083 (Note 3)	
1610-150	Speed bump	

Notes:

- (1) Always use the 1615-080 Warning Sign when installing traffic spikes.
- (2) Lock down handles not included.
- (3) Lock down handles required to place spikes in the locked down position.