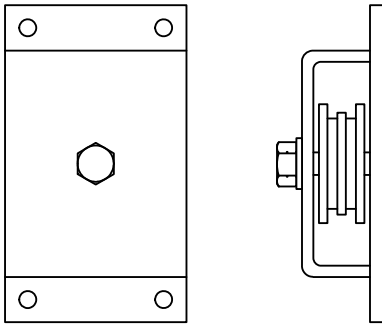


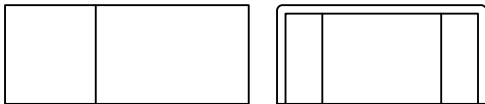
## DoorKing Slide Gate Accessories

The DKS chain idler assembly is used when slide gate operators are rear-mounted. This idler assembly can be used with operators that use #40 or #41 chain. The end retainer provides a guide for slide gates to slip into, and has a cap that prevents the gate from being lifted off the track when it is in the full closed position.



### Chain Idler Assembly

- Use when rear mounting slide gate operators
- Chain guide is enclosed
- Easily mounts to a wall
- Use with #40 or 41 chain



### End Retainer

- Designed for slide gates with 2-inch frame
- Capped retainer prevents gate from being lifted off track – increases security
- Beveled opening

Slide Gate Accessories		
P/N	Description	
2600-818	Idler Assembly	
1204-004	End Retainer	