

FOR HORIZONTAL MAILBOXES



**STANDARD CAM LOCK (670-07)**

Bommer provides a cam type lock with 5-pin tumbler and 2 keys as standard equipment on all horizontal mailboxes. It can be supplied in 1,000 different key changes. To order replacement locks, contact factory.

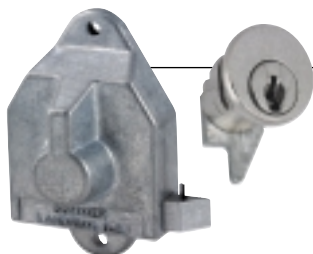
The following locks are available as options for Bommer horizontal mailboxes:



**SUPPLIED BY BOMMER**

**COMBINATION LOCK (672-01)**

3-digit, single dial type with spring latch and automatic throw-off. For dormitories or other installations not serviced by the Postal Service.



**SPRING LATCH TYPE LOCK (671-04)**

Includes 5-pin tumbler cylinder 670-08 with 2 keys and spring latch housing. Can be supplied in 1,000 different key changes. Not compatible with 660-06 window on size "1" door.



**4-POINT LOCKING SYSTEM**

Provides added protection against break-ins. When locked, the door is secured at two points each, top and bottom, and by reinforced continuous interlocking extrusions at the pivot side. The five-pin lock is available with 1,000 key changes.

*Note: Available only for Series HS6200 and HS6300 mailboxes.*

**DOOR IDENTIFICATION:**

*Choose from a variety of door identification items for Bommer mailboxes*

**CARDBOARD STRIP NUMBER TAB (660-01)**

Furnished as standard (15/32" high x 1 7/8" wide) with mailbox units. Numbers are printed on tab by owners. Use with 660-08.

**CARDBOARD NAME CARD (660-05)**

Supplied as standard (3/8" high x 3 1/2" wide) for listing patron's name on interior of mailbox compartment in channel type holder built into unit. Visible only to postman.

**PLEXIGLASS WINDOW (660-06)**

Available as optional item (1 7/16" high x 2 1/4" wide). Not permitted on units serviced by the Postal Service. Must state series of boxes window will be used on. Not compatible with 671-04 on size "1" door.



**LAMINATED PLASTIC NUMBER TABS (660-07)**

Black plastic engraved with white numerals (17/32" high x 2" wide). Available as optional items. Numbers to be engraved on tabs must be supplied with order. Use with 660-08.



**TRANSPARENT PLASTIC WINDOW (660-08)**

Furnished as standard window slot over cardboard or laminated plastic number tabs (1 7/16" high x 2 1/4" wide). Use with 660-01 and 660-07.



*Note: Engraved 1/2" high number on door also available.*

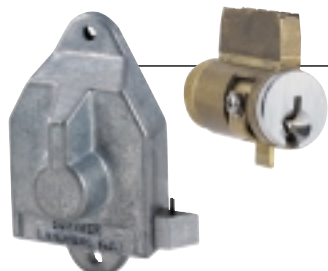


**SUPPLIED BY CUSTOMER**

**REMOVABLE CORE LOCK**

Complete assembly, adapted by lock manufacturer to fit mailbox doors. Supplied by customer for installation by Bommer.

Assembly No.	Pins	Manufacturer
A7115	5	Best
A7116	6	Best
A7117	7	Best
6060-12605A	5	Falcon
6060-12606A	6	Falcon
6060-12607A	7	Falcon



**KEYED-IN CYLINDERS**

Special cylinders keyed into building keying system, supplied by customer for installation with spring latch type housing. Cylinder numbers listed include special adaptation made by cylinder manufacturer. Not compatible with 660-06 window or size "1" door.

Cylinder No.	Manufacturer
9095	Dexter
954	Falcon
4101	Sargent
20-069	Schlage
145	Weslock
C1810	Yale
20-0106	Medeco