



THE NAME

---

TO KNOW IN

---

POSTAL

---

SPECIALTIES

---



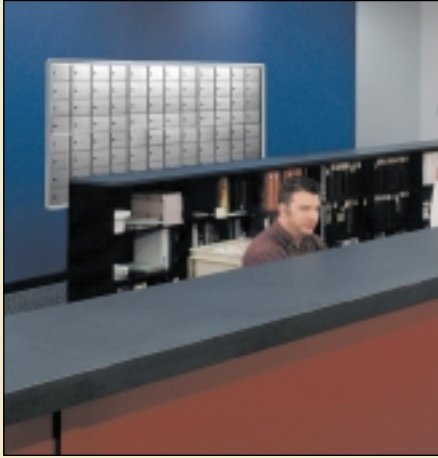
**LEE DAN COMMUNICATIONS, INC.**  
155 Adams Avenue, Hauppauge NY 11788-3699

YEAR AFTER YEAR,

OUR REPUTATION

IS BASED ON

PERFORMANCE



Bommer enjoys a reputation as one of the oldest and most proficient manufacturers of Postal Service-approved mailboxes. Models carrying the Bommer trademark have become the standard for multiple-dwelling units: apartment houses, condominiums, dormitories and other institutional-type facilities.

#### DESIGN ASSISTANCE

Our engineering staff is available to architects and specification writers in the planning of mail distribution facilities and the specifying of mailboxes and related items. We also assist apartment owners and managers to help determine their requirements, in accordance with the latest U.S.P.S. regulations.

Whenever your requirements include architectural grade hardware or postal specialties, you can feel confident specifying the Bommer line.



## SUGGESTED SPECIFICATIONS

### ALL MAILBOXES

#### GENERAL

Furnish and install mailboxes and accessories in quantities and at locations indicated on drawings.

#### U.S.P.S. REGULATIONS

Materials, sizes, construction and installation shall comply with all current U.S.P.S. regulations.

#### LOCKS

Each mail compartment door shall be provided with a lock, keyed different from all other locks supplied for the project. A minimum of 1,000 key changes shall be available for the type lock supplied.

Locks shall be:

- (a) 5-pin tumbler cam type and shall be supplied with \_\_\_\_ change keys per lock.
- (b) spring bolt type which automatically latches when door is closed and shall be controlled by a 5-pin tumbler cylinder, furnished with \_\_\_\_ change keys per lock
- (c) spring bolt type which automatically latches when door is closed and shall be controlled by cylinders keyed into the building keying system. Cylinders, adapted to fit mail box doors and locks, are specified to be furnished by the hardware supplier and shall be installed in doors by the mail box manufacturer.

#### KEY KEEPER

A Bommer No. \_\_\_\_ Key Keeper with \_\_\_\_ finish shall be provided at the entrance door to lobby.

#### LETTER DROP

A Bommer No. 402 Letter Drop with \_\_\_\_ finish shall be provided at location indicated on drawings.

#### MAIL COLLECTION BOX

A Bommer No. \_\_\_\_ mail collection box with \_\_\_\_ finish shall be provided at location indicated on drawings.

### HORIZONTAL MAILBOXES

#### ARRANGEMENT OF QUANTITIES AND MAILBOXES

shall be as indicated on construction drawings. Shop drawings showing fabrication and installation details shall be supplied for approval, prior to fabrication of mailboxes.

### CONSTRUCTION

Mail compartments shall be double-wall type, made of sheet aluminum. Frame members shall be heavy gauge extruded aluminum sections. Compartment doors shall be extruded aluminum not less than .156" thick, reinforced at each edge with integral ribs. Doors shall swing on concealed pivots.

#### TYPE

Mailboxes shall be Bommer \_\_\_\_ Series, Model No. \_\_\_\_ horizontal type.

Units shall be:

- (a) front loading. The master door shall be hinged to the units with a continuous stainless steel hinge. Single-point locking shall be provided for master doors 4 or less standard compartments high; a spring-actuated latch at top and bottom shall be provided for master doors of greater height to provide 3-point locking. Access to latch shall be through one compartment door, reserved for and designed to accommodate a lock supplied by the U.S.P.S.

*Note: For mailboxes not serviced by the U.S.P.S., substitute the following for the last sentence of above paragraph:*

**Access to latch shall be through one compartment door, and lock for this door shall be... (1) 5-pin cam type ... (2) same type specified for doors of mail compartments.**

- b) rear loading. Rear cover shall be made of sheet aluminum not less than .050" thick, formed with a return at edges to provide rigidity, and secured with latch bolts.

#### LOCKS

Bommer offers three (3) additional locks for horizontal mailboxes:

- a) removable core cylinder type. Complete lock assembly and removable core cylinders, adapted to fit mailbox doors, are specified to be furnished by the hardware supplier and shall be installed in doors by the mailbox manufacturer.
- (b) combination type with spring latch bolt. Locks shall be 3-digit single dial type with automatic throw-off.

*Note: Combination locks are not approved for use on mailboxes serviced by employees of the U.S.P.S.*

- (c) 5-pin tumbler lock with 4-point locking system shall be supplied with 1,000 change keys per lock.

**COMPARTMENT IDENTIFICATION**

Each compartment shall be equipped with a channel type holder to accommodate a name card for identifying the tenant using the box. Each door shall be:

- (a) provided with a slot 5/8" high by 2" wide, fitted with a transparent plastic cover and steel back plate, and supplied with a standard cardboard strip on which room or apartment number can be printed by owner.
- (b) supplied with room or apartment numbers 1/2" high, engraved into face of door. Numbers shall be as directed by the architect or owner.
- (c) provided with a slot 5/8" high and 2" wide, fitted with a transparent plastic cover and steel back plate, and supplied with a laminated black plastic strip engraved with white numbers. Numbers shall be as directed by the architect or owner.
- (d) supplied with a 1 1/8" high x 2 1/2" wide x 3/16" thick Plexiglas window with room or apartment number 1/2" high engraved in window. Numbers shall be as directed by architect or owner. (Note: Windows are not approved for use in units serviced by employees of the U.S.P.S.)

**TRIM**

Peripheral trim 9/16" x 1 1/2", snap-on type extruded aluminum to match mailboxes, shall be supplied in standard 5' lengths with mailbox units.

**DIRECTORIES**

Shall be Bommer 6900 series, designed to match horizontal mailboxes. Units shall be:

- (a) top mounted type \_\_\_\_ of same width as mailboxes.
- (b) side mounted or separate type 6921 of same height as mailboxes. A sufficient number of directory panels shall be supplied to provide one 3/8" name line per mail compartment, plus 40 percent.

**FINISH**

Fronts of compartment door units shall:

- (a) be 628 natural anodized aluminum.
- (b) have a \_\_\_\_ finish.

**INSTALLATION**

Mailbox units and accessories shall be installed in accurately framed openings, with units plumb and adequately secured

in position. Miscellaneous blocking and trim required for proper installation shall be furnished and installed by the contractor.

**For 6001 and 6101 series, modify above specifications as follows:**  
 (1) Delete references to U.S.P.S. regulations, locks, etc.  
 (2) Select and substitute applicable directory numbers from page 13.

**VERTICAL MAILBOXES**

**CONSTRUCTION**

Each mailbox shall consist of 3 to 7 compartments enclosed within a wall box. Both the compartments and wall box shall be constructed of not less than .028" galvanized and chromated steel, riveted and spot welded. Compartment doors and exposed frame members shall be made of extruded and anodized aluminum not less than .085" thick. Doors shall swing on concealed pivots. All exposed surfaces shall have a \_\_\_\_ finish.

**MOUNTING FRAMES**

(Optional: for use where recessed mounting is not practical.) Mounting frames shall be supplied for all mailbox units. Frames shall be:

- (a) full surface type, Bommer No. \_\_\_\_
- (b) semi-recess type, Bommer No. \_\_\_\_

**DIRECTORIES**

(Required in all apartment buildings having 15 or more mailbox compartments.) Directory panels, Bommer Nos. \_\_\_\_ shall be provided in a separate frame or receptacle, Bommer Type \_\_\_\_, made of aluminum and designed for (surface)

installation. Panels shall be fabricated from aluminum extrusions. Quantities and arrangement of panels shall be as indicated on construction drawings. Exposed surfaces of panels shall have a \_\_\_\_ finish.

**INSTALLATION**

Installation of units with push buttons and speaker panels shall be coordinated with installation of wiring, speakers, etc., specified under electrical sections of specification.

**FINISHES FOR MAILBOXES AND ACCESSORIES**

The following finishes are available for Bommer mailboxes and accessories:

*BAKED ENAMEL:*

- 382 Medium Bronze
- 383 Dark Bronze
- 384 Black
- 385 Gold

*ANODIZED & DURANODIC:*

- 628 Natural Anodized Aluminum
- 688 Gold Anodized Aluminum
- 392 Medium Bronze Duranodic
- 393 Dark Bronze Duranodic

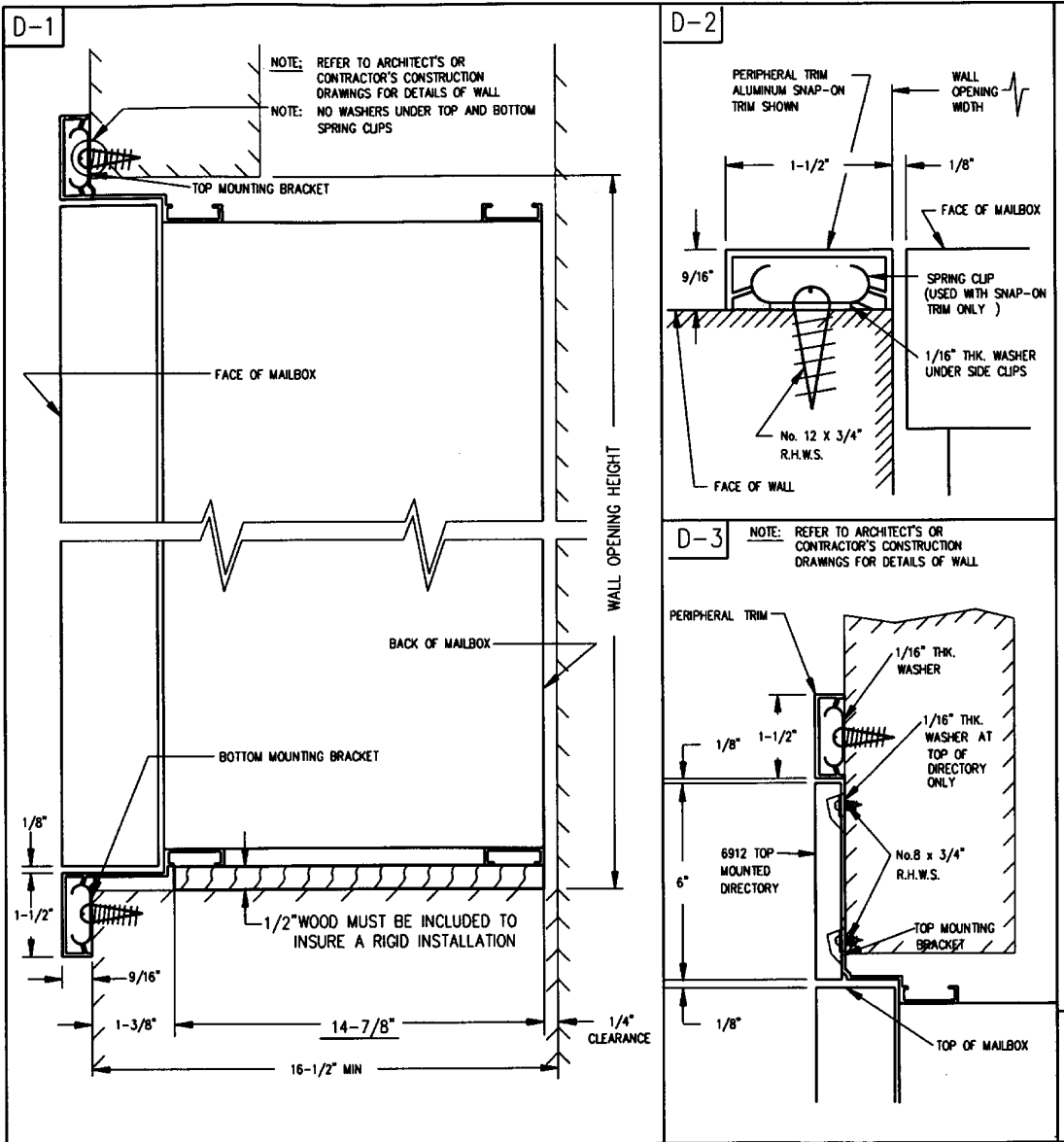
*Note: Uniformity of color cannot be guaranteed by our anodizers. This may result in color variance on doors within an individual mailbox. In an effort to furnish a uniform color, Bommer Industries oversprays all duranodic and gold anodized horizontal mailboxes with a light coat of matching baked enamel. If you prefer that we do not overspray the mailbox on a specific job, please inform our Customer Service Department when ordering.*

**Contents:**

Horizontal Order Feature Sheet .....	4
6200 Series Horizontal Mailboxes, U.S.P.S. Approved.....	6, 7
6300 Series Horizontal Mailboxes, U.S.P.S. Approved.....	8, 9
6001/6101 Series Horizontal Mailboxes, Not U.S.P.S. Approved.....	10, 11
Optional Locks and Door Identification for Horizontal Mailboxes.....	5

# HORIZONTAL MAILBOX ORDER FEATURE SHEET

Customer Name \_\_\_\_\_ P.O. Number \_\_\_\_\_



## MATERIAL

- Aluminum

## FINISHES

- 628 Natural Anodized Aluminum
- 384 Black Enamel
- 688 Gold Anodized Aluminum
- 385 Gold Enamel
- 382 Medium Bronze Enamel
  
- 383 Dark Bronze Enamel
- 393 Dark Bronze Duranodic

## TENANT LOCKS

- 5-pin tumbler cam type lock
- Keyless knob cam latch
- Keyless knob spring latch
- Spring latch with 5-pin tumbler lock cylinder
- Spring latch with keyed-in cylinders, cylindrical lock type cylinders to be furnished by

hardware supplier and installed by Bommer.

- Cylinder manufacturer and number \_\_\_\_\_
- Removable core lock. Spring latch assembly and cylinder to be furnished by hardware supplier and installed by Bommer. Lock manufacturer and number \_\_\_\_\_
- Combination lock with spring latch bolt. 3-digit single dial type with automatic throw off

## KEYS

\_\_\_\_\_ per lock

## IDENTIFICATION

- Doors with slots 5/8" high x 2" wide, with transparent plastic cover, steel back plate and cardboard strip.
- Doors with numbers 1/2" high, engraved into face of door. Letters used as titles: example "Letters" shall be 1" high. Letters used with numbers: example: "A-109" shall be 1/2" high.

- Doors with slots 5/8" high x 2" wide, with transparent plastic cover, steel back plate and laminated black plastic strip engraved with white numbers.
- Doors with slots 1-1/8" high x 2" wide supplied with 3/16" thick Plexiglas window with numbers 1/2" high, engraved into window.

## PERIPHERAL TRIM

- Trim by others
- Snap-on trim 1-1/2" x 9/16" x 5', must cut to length and miter corners on job.

## DIRECTORY

- 6912 top mounted with 10 name lines per panel

## CONTROL LOCKS (FRONT LOADING UNITS ONLY)

- Postal service lock (supplied by local postal authorities)
- 5-pin tumbler cam type lock, keyed alike with \_\_\_\_\_ keys per lock

FOR HORIZONTAL MAILBOXES



**STANDARD CAM LOCK (670-07)**

Bommer provides a cam type lock with 5-pin tumbler and 2 keys as standard equipment on all horizontal mailboxes. It can be supplied in 1,000 different key changes. To order replacement locks, contact factory.

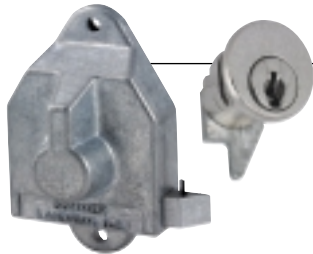
The following locks are available as options for Bommer horizontal mailboxes:



**SUPPLIED BY BOMMER**

**COMBINATION LOCK (672-01)**

3-digit, single dial type with spring latch and automatic throw-off. For dormitories or other installations not serviced by the Postal Service.



**SPRING LATCH TYPE LOCK (671-04)**

Includes 5-pin tumbler cylinder 670-08 with 2 keys and spring latch housing. Can be supplied in 1,000 different key changes. Not compatible with 660-06 window on size "1" door.



**4-POINT LOCKING SYSTEM**

Provides added protection against break-ins. When locked, the door is secured at two points each, top and bottom, and by reinforced continuous interlocking extrusions at the pivot side. The five-pin lock is available with 1,000 key changes.

*Note: Available only for Series HS6200 and HS6300 mailboxes.*

**DOOR IDENTIFICATION:**

*Choose from a variety of door identification items for Bommer mailboxes*

**CARDBOARD STRIP NUMBER TAB (660-01)**

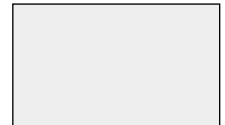
Furnished as standard (15/32" high x 1 7/8" wide) with mailbox units. Numbers are printed on tab by owners. Use with 660-08.

**CARDBOARD NAME CARD (660-05)**

Supplied as standard (3/8" high x 3 1/2" wide) for listing patron's name on interior of mailbox compartment in channel type holder built into unit. Visible only to postman.

**PLEXIGLASS WINDOW (660-06)**

Available as optional item (1 7/16" high x 2 1/4" wide). Not permitted on units serviced by the Postal Service. Must state series of boxes window will be used on. Not compatible with 671-04 on size "1" door.



**LAMINATED PLASTIC NUMBER TABS (660-07)**

Black plastic engraved with white numerals (17/32" high x 2" wide). Available as optional items. Numbers to be engraved on tabs must be supplied with order. Use with 660-08.



**TRANSPARENT PLASTIC WINDOW (660-08)**

Furnished as standard window slot over cardboard or laminated plastic number tabs (1 7/16" high x 2 1/4" wide). Use with 660-01 and 660-07.



*Note: Engraved 1/2" high number on door also available.*

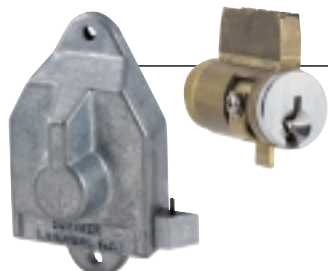


**SUPPLIED BY CUSTOMER**

**REMOVABLE CORE LOCK**

Complete assembly, adapted by lock manufacturer to fit mailbox doors. Supplied by customer for installation by Bommer.

Assembly No.	Pins	Manufacturer
A7115	5	Best
A7116	6	Best
A7117	7	Best
6060-12605A	5	Falcon
6060-12606A	6	Falcon
6060-12607A	7	Falcon



**KEYED-IN CYLINDERS**

Special cylinders keyed into building keying system, supplied by customer for installation with spring latch type housing. Cylinder numbers listed include special adaptation made by cylinder manufacturer. Not compatible with 660-06 window or size "1" door.

Cylinder No.	Manufacturer
9095	Dexter
954	Falcon
4101	Sargent
20-069	Schlage
145	Weslock
C1810	Yale
20-0106	Medeco

Not U.S.P.S. approved



The Student Union building at the University of North Carolina– Greensboro has over 13,000 rear-loading Bommer mailboxes.



MODEL 6111

**FRONT LOADING 6001 SERIES  
REAR LOADING 6101 SERIES**

Compartment sizes of the 6001 and 6101 Series do not comply with U.S.P.S. regulations. These models are particularly suited for private distribution, such as campus post offices, military installations, hospitals and other installations where mail is handled internally.

**MODEL 6011/6111**

The 6011/6111 are composed of all size "1" doors.

**MODEL 6031/6131**

The 6031/6131 models are the same as the 6011/6111 except they contain one or more multiple size doors. A layout must accompany all orders.

**SPECIFICATIONS**

**COMPARTMENT SIZE**

- 5" high x 3 1/2" wide x 15" deep (standard)

**DOOR LOCK**

- 5-pin cam type with 2 keys (standard)
- Optional locks – see page 12

**DOOR IDENTIFICATION**

- 5/8" x 2" number slot, with plastic window (standard)
- Optional identification – see page 12

**FINISH**

- 628 natural anodized aluminum (standard)
- Optional finishes – see page 3

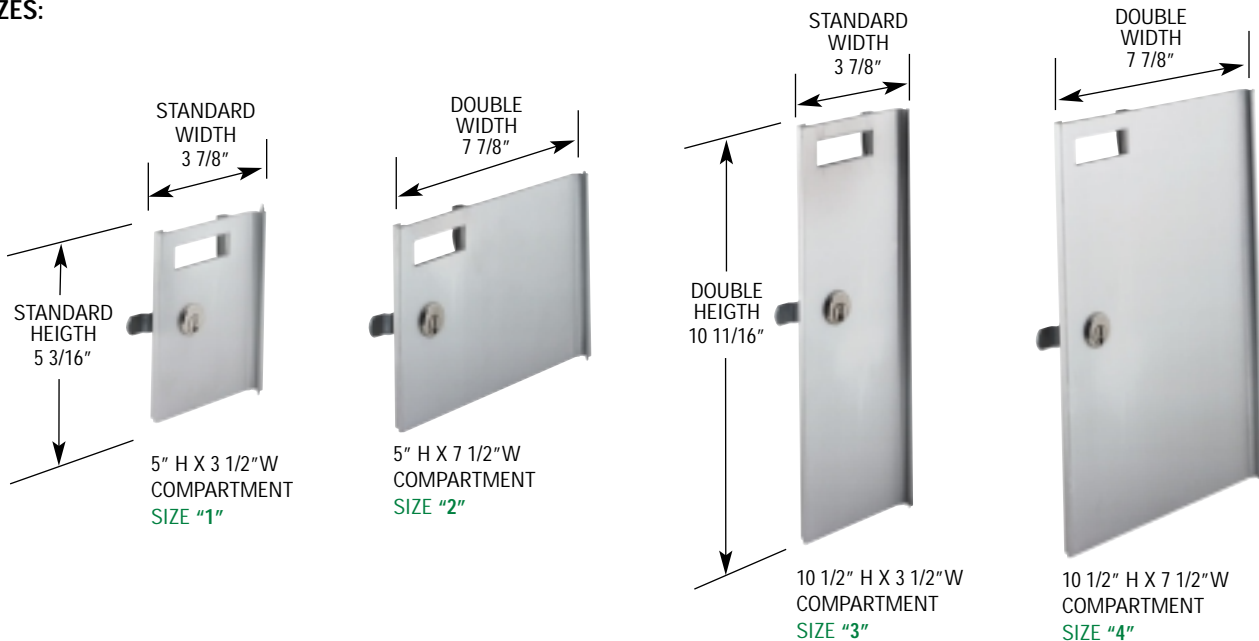
**DIRECTORIES**

- Side and separate and top mounted available – see page 13

**SNAP-ON TRIM**

- 9/16"x 1 1/2" extruded aluminum

**OPTIONAL COMPARTMENT DOOR SIZES:**



**FRONT LOADER 6001 SERIES**

**REAR LOADER 6101 SERIES**

4 UNITS HIGH				
Height Dimension: Mailbox 1'- 10 1/2"				
Rough Opening 1' - 111/2"				
Number of Tenants	Model Number (s) and Order Quantity	Approx. Shipping Weight in Pounds	Control Locks	Rough Wall Opening Width
11	(1)6011-43	35	1	1'-1 3/8"
15	(1)6011-44	42	1	1'-5 3/8"

4 UNITS HIGH			
Height Dimension: Mailbox 1'- 10 1/2"			
Rough Opening 1' - 111/2"			
Number of Tenants	Model Number (s) and Order Quantity	Approx. Shipping Weight in Pounds	Rough Wall Opening Width
12	(1)6111-43	35	1'-0 15/16"
16	(1)6111-44	42	1'-4 15/16"

5 UNITS HIGH				
Height Dimension: Mailbox 2'-4"				
Rough Opening 2'-5"				
Number of Tenants	Model Number (s) and Order Quantity	Approx. Shipping Weight in Pounds	Control Locks	Rough Wall Opening Width
14	(1)6011-53	40	1	1'-1 3/8"
19	(1)6011-54	50	1	1'-5 3/8"
24	(1)6011-55	60	1	1'-9 3/8"

5 UNITS HIGH			
Height Dimension: Mailbox 2'-4"			
Rough Opening 2'-5"			
Number of Tenants	Model Number (s) and Order Quantity	Approx. Shipping Weight in Pounds	Rough Wall Opening Width
15	(1)6111-53	40	1'-0 15/16"
20	(1)6111-54	50	1'-4 15/16"
25	(1)6111-55	60	1'-8 15/16"

6 UNITS HIGH				
Height Dimension: Mailbox 2'-9 1/2"				
Rough Opening 2'-101/2"				
Number of Tenants	Model Number (s) and Order Quantity	Approx. Shipping Weight in Pounds	Control Locks	Rough Wall Opening Width
17	(1)6011-63	47	1	1'-1 3/8"
23	(1)6011-64	59	1	1'-5 3/8"
29	(1)6011-65	70	1	1'-9 3/8"
35	(1)6011-66	82	1	2'-1 3/8"

6 UNITS HIGH			
Height Dimension: Mailbox 2'-9 1/2"			
Rough Opening 2'-101/2"			
Number of Tenants	Model Number (s) and Order Quantity	Approx. Shipping Weight in Pounds	Rough Wall Opening Width
18	(1)6111-63	47	1'-0 15/16"
24	(1)6111-64	59	1'-4 15/16"
30	(1)6111-65	70	1'-8 15/16"
36	(1)6111-66	82	2'-0 15/16"

7 UNITS HIGH				
Height Dimension: Mailbox 3'-3"				
Rough Opening 3'-4"				
Number of Tenants	Model Number (s) and Order Quantity	Approx. Shipping Weight in Pounds	Control Locks	Rough Wall Opening Width
20	(1)6011-73	53	1	1'-1 3/8"
27	(1)6011-74	66	1	1'-5 3/8"
34	(1)6011-75	80	1	1'-9 3/8"
41	(1)6011-76	93	1	2'-1 3/8"
48	(1)6011-77	107	1	2'-5 3/8"

7 UNITS HIGH			
Height Dimension: Mailbox 3'-3"			
Rough Opening 3'-4"			
Number of Tenants	Model Number (s) and Order Quantity	Approx. Shipping Weight in Pounds	Rough Wall Opening Width
21	(1)6111-73	53	1'-0 15/16"
28	(1)6111-74	66	1'-4 15/16"
35	(1)6111-75	80	1'-8 15/16"
42	(1)6111-76	93	2'-0 15/16"
49	(1)6111-77	107	2'-4 15/16"

**6001 SERIES ROUGH WALL OPENING WIDTH FORMULA:**

Multiply total size "1"  
 (or equivalent "1" doors wide) by 4 inches.... =  
 Multiply total units by 1.1875 inches..... = + \_\_\_\_\_  
 + .1875 inches  
 Total rough opening width ..... = \_\_\_\_\_ inches

**6101 SERIES ROUGH WALL OPENING WIDTH FORMULA:**

Multiply total size "1"  
 (or equivalent "1" doors wide) by 4 inches.... =  
 Multiply total units by .6875 inches..... = + \_\_\_\_\_  
 + .250 inches  
 Total rough opening width ..... = \_\_\_\_\_ inches

8 UNITS HIGH			
Height Dimension: Mailbox 3'-81/2"			
Rough Opening 3'-91/2"			
Number of Tenants	Model Number (s) and Order Quantity	Approx. Shipping Weight in Pounds	Rough Wall Opening Width
24	(1)6111-83	59	1'-0 15/16"
32	(1)6111-84	73	1'-4 15/16"
40	(1)6111-85	90	1'-8 15/16"
48	(1)6111-86	107	2'-0 15/16"
56	(1)6111-87	124	2'-4 15/16"

**Minimum wall depth 16 1/2"**